

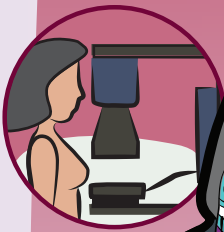


Andooshkigaadeg amogowin giwijji'igon ji-mino-bimaadiziyan

Andooshkigaadeg amogowin noojichigaade awiyag gegoo inamanji'osigwaa maagizhaa dash daa-ani-amogowag. Daabida ji-waabamind awiya daga gegoo amogowin ayaad gemaa ge-ayaapan, wiiba mikigaadeg nawach daa-nanaandawi'igaade.

Niswewig andooshkaam amogowin awiyag ge-gashkitoowaapan imaa Ontario akiing.

DOODOOSHIMAA Zhaabwaakizwaawin



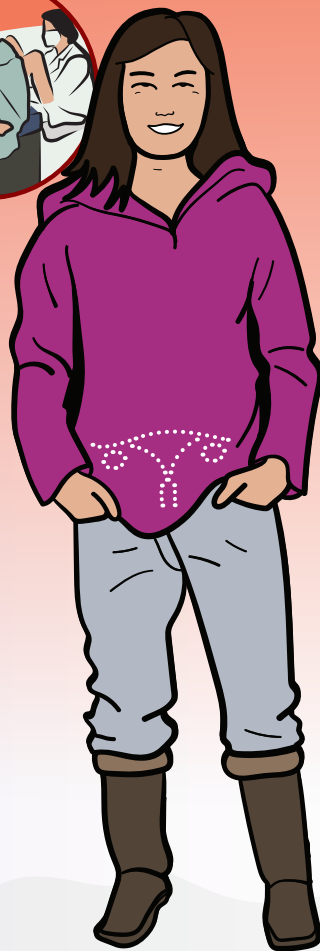
Awiyag^{*} 50 akoo 74 apiitiziwaad ge-waabamindwaaban.

Endaso-niizhwaaki niibowa awiyag

Giishin inendaman ji-ayaayan doodooshimaa-amogowin zhigwa 30 akoo 69 apiitiziyan, gaganoonzh gimashkikiwininiim gemaa gimashikiwikwem gidishkoniganing mino-ayaawin enokaadeg gemaa aakozii-wigamigoosing imaa eyaamagak. Maagizhaa gidaa-izhinizha'amaagoo ji-waabamigoowin aaniin enawemadwaa gaa-bi-inaapinewad gemaa giin gaa-bi-inaapineyan.

*Andooshkigaadeg doodooshimaa-amogowin gaanzomaawag ikwewag, ikwekaaneziwaad ininiwag zhigwa bebakaan wedooshimaawaad 50 akoo 74 apiitiziwaad ji-waabamindwaaban imaa Ontario Breast Screening Program (OBSP) gaa-ijigaadeg.

ODATAGWAAGAN Ikwewing Andooshkigan



Awiyag[†] 21[†] akoo 70 apiitiziwaad ji-waabamindwaaban.

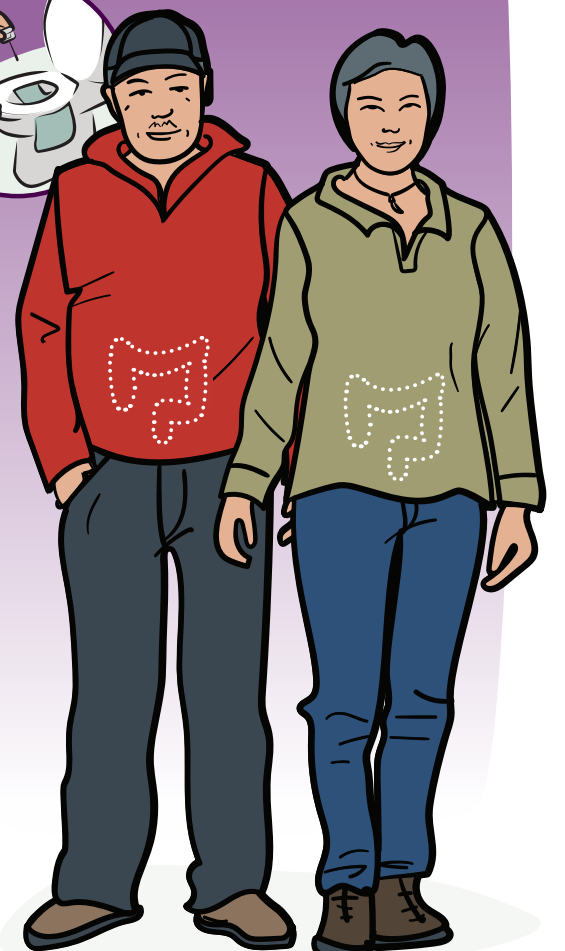
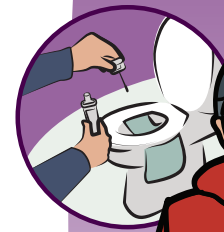
Endaso-niswaaki niibowa onji

†Gidatagwaagan ji-waabamindwaa awiyag odikwewin ayaawaad (daashkoo ikwewag, ikwekaaneziwaad ininiwag, bebakaan dinowag) awiyag bakaan awiyag gii-wiipemaawaad.

‡Giishpin jibwaa 25 apiitiziwan, gaganoonzh gimino-ayaawin naagajitood daga ji-bii'oyamban mini 25 ji-apiitiziyan jibwaa andooshkigaadeg amogowin gidatagwaaganing gemaa gidikwewining.

BIINJIDIY

Moowing Andooshkigewin Amogowin



Awiyag 50 akoo 74 apiitiziwaad ge-waabamindwaaban.

Giishin giniigi'ig, gidawemaa gemaa abinoojii amogowid biinjidiy, ganoonzh gimino-ayaawin naagajitood daga gegiin ji-waabamigooyamban ji-andooshkigaadeg wiiba.

Endaso-niizhwaaki niibowa awiyag

Gidaa-andooshkikamaadiz endayaan.

Gaawin diba'igesiiwag Ontario onji awiyag ji-andooshkigaadenig.

Gego da-boonagindesinoon iwe Ontario Health Insurance Plan (OHIP) gaa-ijigaadeg.

Maagizhaa igi Ontario Health (Cancer Care Ontario) mazina'igan giga-izhinizha'amaagoog ji-andooshkamookwaa amogowin. Ono mazina'iganan igi Ontario amogowin endone'amowaad.

Ganoonzh gimino-ayaawin gaa-naagajitood ji-gikendaman aaniin ge-izhi-andooshkigaadeg daga ji-amogowin. Giishpin ayaawaasiwad awiya gimino-ayaawin naagajitoosig, izhaan: iphcc.ca/home/iphcc_members/ and afhto.ca/find-team-near-you

Giiyaabi noonde-gikendaman amogowin andooshkigaadeg, izhaan: cancercareontario.ca/getchecked

Ginandawendaan ina owe wiindamaagewin ji-wenji-ondinamamban? 1-877-280-8538, TTY 1-800-855-0511, info@ontariohealth.ca



Ontario Health
Cancer Care Ontario