

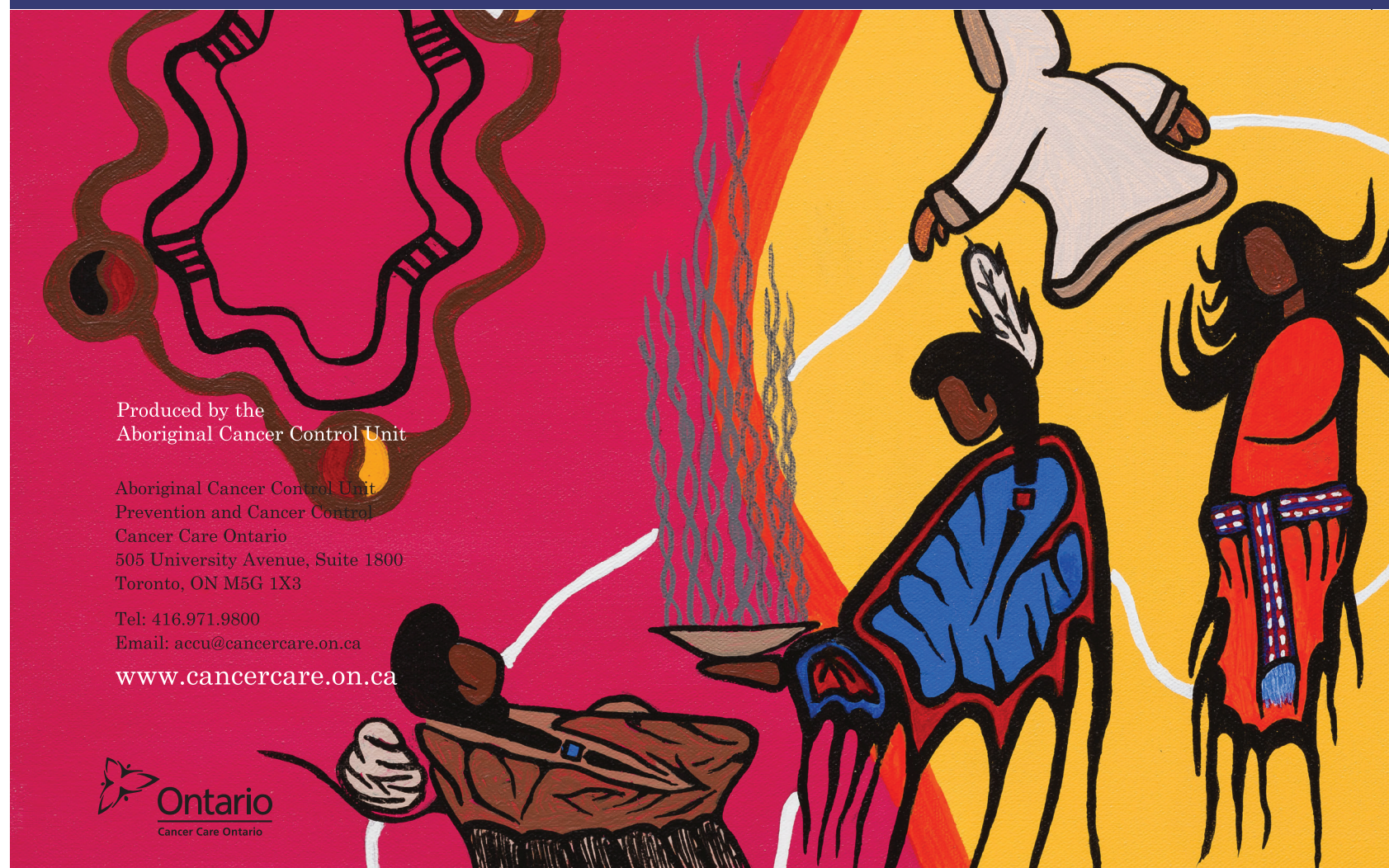
4x9 finished size - with 1 inner right side pocket  
Pocket glued

PALLIATIVE CARE IN FIRST NATIONS,  
INUIT AND MÉTIS COMMUNITIES

PALLIATIVE CARE IN FIRST NATIONS,  
INUIT AND MÉTIS COMMUNITIES

Thank you to the many First Nations,  
Inuit and Métis individuals across Ontario  
whose ideas helped to shape this toolkit.

# Tools for the Journey



Produced by the  
Aboriginal Cancer Control Unit

Aboriginal Cancer Control Unit  
Prevention and Cancer Control  
Cancer Care Ontario  
505 University Avenue, Suite 1800  
Toronto, ON M5G 1X3

Tel: 416.971.9800  
Email: [accu@cancercare.on.ca](mailto:accu@cancercare.on.ca)

[www.cancercare.on.ca](http://www.cancercare.on.ca)



# Tools for the Journey

PALLIATIVE CARE IN FIRST NATIONS,  
INUIT AND MÉTIS COMMUNITIES

glued flap - gusset  
on outer edge

one pocket  
interior right

inner  
gusset

Toronto based artist Mike Ormsby works primarily in acrylic on canvas, but also carves in antler and stone. Mike was mentored by the late Ojibway artist Norman Knott.

Mike signs his work as W' DAE B' WAE, his Anishinaabe name that the late Elder Art Solomon gave him. From the Anishinaabe Thesaurus by Basil Johnston: "...w'dae'b'wae, meaning "he or she is telling the truth, is right, is correct, is accurate."

Mike hopes his art speaks to that truth, telling the stories of the Anishinaabe, sharing the culture and traditions. But the truth in his art may also be different for others. What Mike sees in his art may differ from what others see....his art may speak to them differently.

Art is healing, a window into the soul; a way to better understand ourselves and each other. To know where one is going, one must know when one has come from.