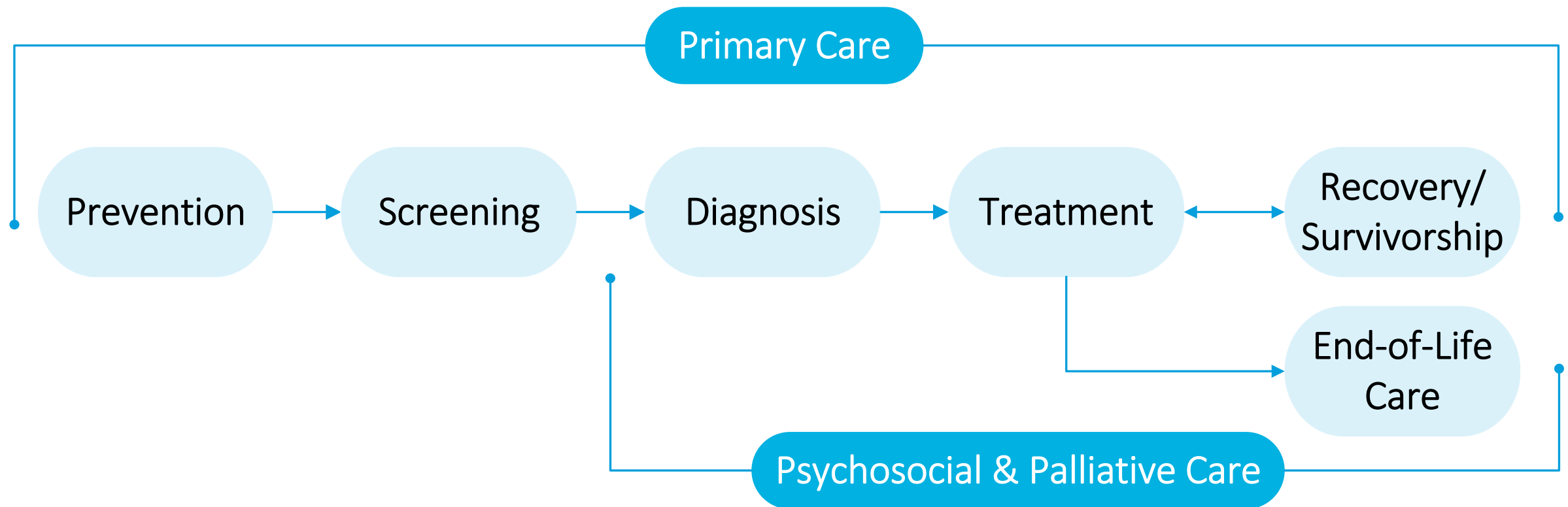


Thymic Cancer Diagnosis Pathway Map

Version 2025.03



Disclaimer: The pathway map is intended to be used for informational purposes only. The pathway map is not intended to constitute or be a substitute for medical advice and should not be relied upon in any such regard. Further, all pathway maps are subject to clinical judgment and actual practice patterns may not follow the proposed steps set out in the pathway map.

In the situation where the reader is not a health care provider, the reader should always consult a healthcare provider if they have any questions regarding the information set out in the pathway map. The information in the pathway map does not create a physician-patient relationship between Ontario Health (Cancer Care Ontario) and the reader.



Ontario Health
Cancer Care Ontario

Target Population

Adult patients presenting with thymic epithelial tumours, including thymoma, thymic carcinoma, and thymic neuroendocrine tumours (NETs).

Pathway Map Considerations

- Primary care providers play an important role in the cancer journey and should be informed of relevant tests and consultations. Ongoing care with a primary care provider is assumed to be part of the pathway map. For patients who do not have a primary care provider, [Health811](#) is a government resource that helps patients find a doctor or nurse practitioner.
- Throughout the pathway map, a shared decision-making model should be implemented to enable and encourage patients to play an active role in the management of their care. For more information see [Person-Centred Care Guideline](#) and [EBS #19-2 Provider-Patient Communication](#).*
- Hyperlinks are used throughout the pathway map to provide information about relevant Ontario Health (Cancer Care Ontario) tools, resources and guidance documents.
- The term ‘health care provider’, used throughout the pathway map, includes primary care providers and specialists, e.g. family doctors, nurse practitioners, and emergency physicians.
- Multidisciplinary Cancer Conferences (MCCs) may be considered for all phases of the pathway map. For more information on Multidisciplinary Cancer Conferences, visit [MCC Tools](#).
- For more information on wait time prioritization, visit [Surgery](#).
- Clinical trials should be considered for all phases of the pathway map.
- Psychosocial oncology (PSO) is the interprofessional specialty concerned with understanding and treating the social, practical, psychological, emotional, spiritual and functional needs and quality-of-life impact that cancer has on patients and their families. Psychosocial care should be considered an integral and standardized part of cancer care for patients and their families at all stages of the illness trajectory. For more information, visit [EBS #19-3](#).*

* **Note.** [EBS #19-2](#) and [EBS #19-3](#) are older than 3 years and are currently listed as ‘For Education and Information Purposes’. This means that the recommendations will no longer be maintained but may still be useful for academic or other information purposes.

© Ontario Health (Cancer Care Ontario) retains all copyright, trademark and all other rights in the pathway map, including all text and graphic images. No portion of this pathway map may be used or reproduced, other than for personal use, or distributed, transmitted or "mirrored" in any form, or by any means, without the prior written permission of Ontario Health (Cancer Care Ontario).

Pathway Map Legend

Colour Guide

Primary Care

Palliative Care

Pathology

Surgery

Radiation Oncology

Medical Oncology

Radiology

Multidisciplinary Cancer Conference (MCC)

Psychosocial Oncology (PSO)

Neurosurgery

Organized Diagnostic Assessment

Shape Guide

Intervention

Decision or assessment point

Patient (disease) characteristics

Consultation with specialist

Exit pathway

Off page reference

R

Referral

Line Guide

Required

Possible

Pathway Map Disclaimer

This pathway map is a resource that provides an overview of the treatment that an individual in the Ontario cancer system may receive.

The pathway map is intended to be used for informational purposes only. The pathway map is not intended to constitute or be a substitute for medical advice and should not be relied upon in any such regard. Further, all pathway maps are subject to clinical judgment and actual practice patterns may not follow the proposed steps set out in the pathway map. In the situation where the reader is not a healthcare provider, the reader should always consult a healthcare provider if he/she has any questions regarding the information set out in the pathway map. The information in the pathway map does not create a physician-patient relationship between Ontario Health (Cancer Care Ontario) and the reader.

While care has been taken in the preparation of the information contained in the pathway map, such information is provided on an “as-is” basis, without any representation, warranty, or condition, whether express, or implied, statutory or otherwise, as to the information’s quality, accuracy, currency, completeness, or reliability.

Ontario Health (Cancer Care Ontario) and the pathway map’s content providers (including the physicians who contributed to the information in the pathway map) shall have no liability, whether direct, indirect, consequential, contingent, special, or incidental, related to or arising from the information in the pathway map or its use thereof, whether based on breach of contract or tort (including negligence), and even if advised of the possibility thereof. Anyone using the information in the pathway map does so at his or her own risk, and by using such information, agrees to indemnify Ontario Health (Cancer Care Ontario) and its content providers from any and all liability, loss, damages, costs and expenses (including legal fees and expenses) arising from such person’s use of the information in the pathway map.

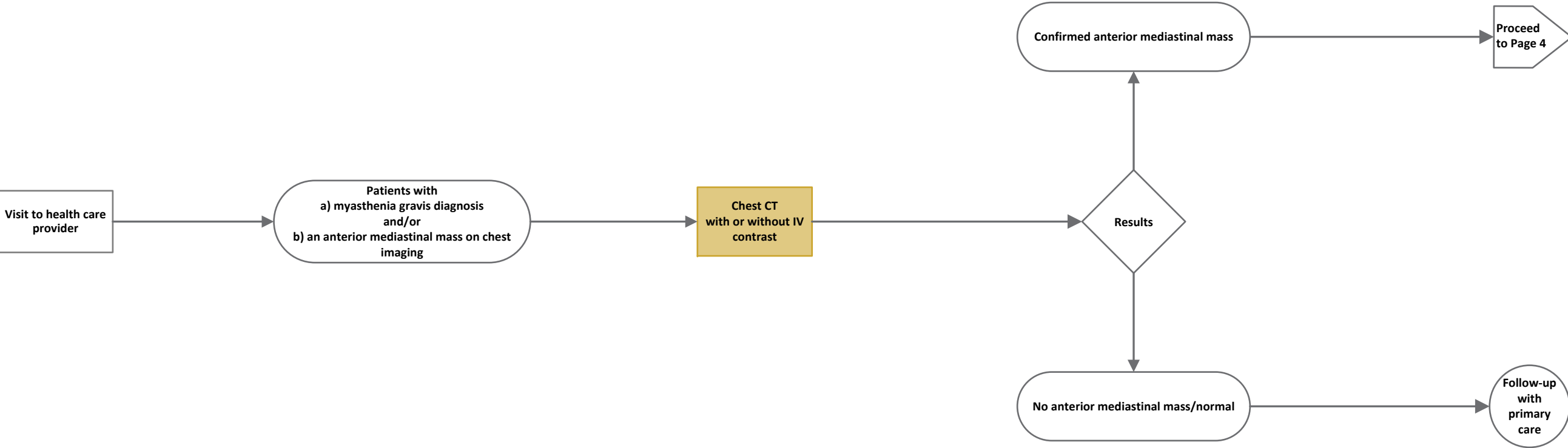
This pathway map may not reflect all the available scientific research and is not intended as an exhaustive resource. Ontario Health (Cancer Care Ontario) and its content providers assume no responsibility for omissions or incomplete information in this pathway map. It is possible that other relevant scientific findings may have been reported since completion of this pathway map. This pathway map may be superseded by an updated pathway map on the same topic.

Thymic Cancers Diagnosis Pathway Map

The pathway map is intended to be used for informational purposes only. The pathway map is not intended to constitute or be a substitute for medical advice and should not be relied upon in any such regard. Further, all pathway maps are subject to clinical judgment and actual practice patterns may not follow the proposed steps set out in the pathway map. In the situation where the reader is not a healthcare provider, the reader should always consult a healthcare provider if he/she has any questions regarding the information set out in the pathway map. The information in the pathway map does not create a physician-patient relationship between Ontario Health (Cancer Care Ontario) and the reader.

Screen for psychosocial needs, and assessment and management of symptoms. [Click here for more information about symptom assessment and management tools](#)

Consider palliative care needs, early and across the care journey. [Click here for more information about palliative care](#)



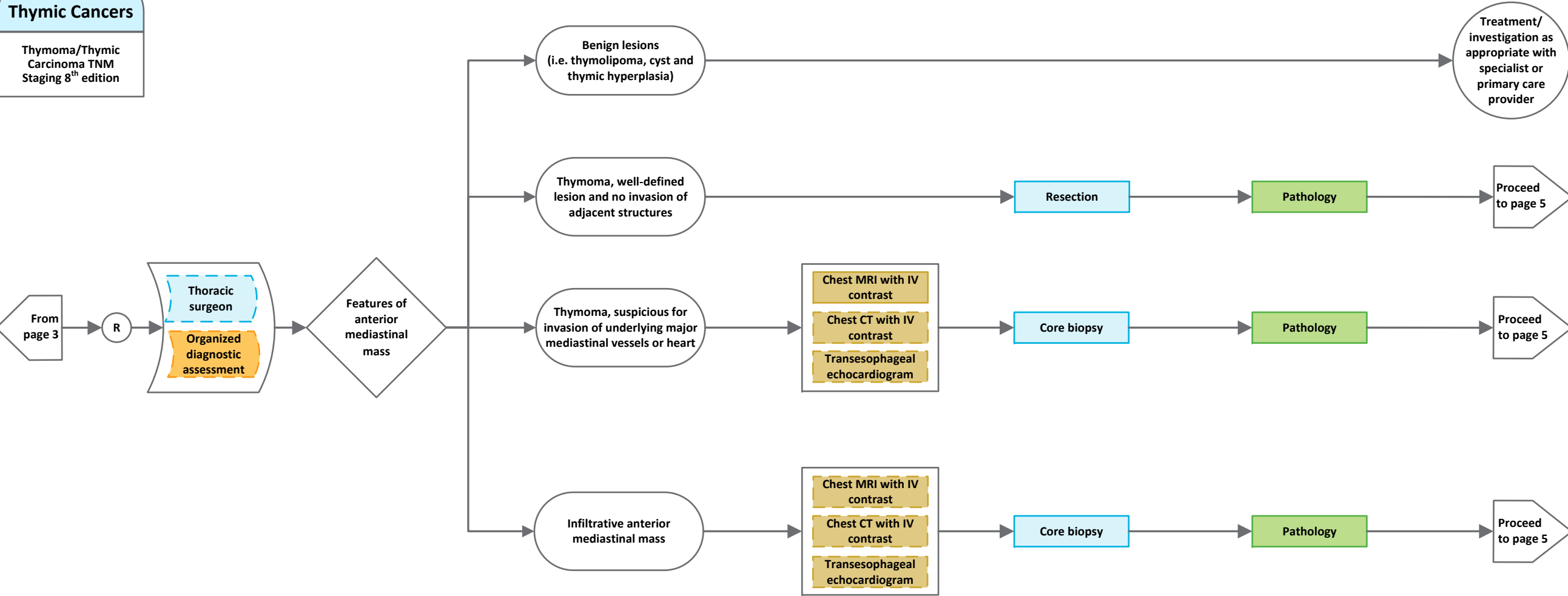
The pathway map is intended to be used for informational purposes only. The pathway map is not intended to constitute or be a substitute for medical advice and should not be relied upon in any such regard. Further, all pathway maps are subject to clinical judgment and actual practice patterns may not follow the proposed steps set out in the pathway map. In the situation where the reader is not a healthcare provider, the reader should always consult a healthcare provider if he/she has any questions regarding the information set out in the pathway map. The information in the pathway map does not create a physician-patient relationship between Ontario Health (Cancer Care Ontario) and the reader.

Screen for psychosocial needs, and assessment and management of symptoms. [Click here for more information about symptom assessment and management tools](#)

Consider palliative care needs, early and across the care journey. [Click here for more information about palliative care](#)

Thymic Cancers

Thymoma/Thymic Carcinoma TNM Staging 8th edition



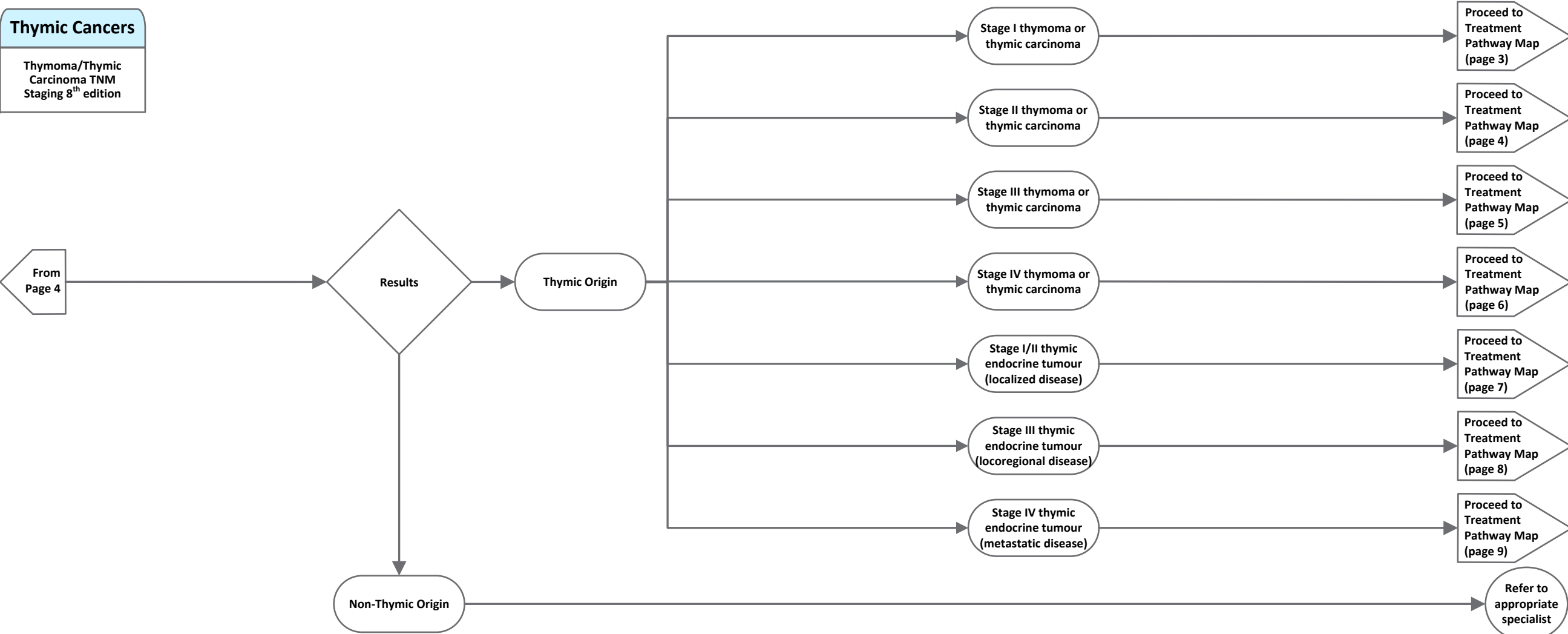
The pathway map is intended to be used for informational purposes only. The pathway map is not intended to constitute or be a substitute for medical advice and should not be relied upon in any such regard. Further, all pathway maps are subject to clinical judgment and actual practice patterns may not follow the proposed steps set out in the pathway map. In the situation where the reader is not a healthcare provider, the reader should always consult a healthcare provider if he/she has any questions regarding the information set out in the pathway map. The information in the pathway map does not create a physician-patient relationship between Ontario Health (Cancer Care Ontario) and the reader.

Screen for psychosocial needs, and assessment and management of symptoms. [Click here for more information about symptom assessment and management tools](#)

Consider palliative care needs, early and across the care journey. [Click here for more information about palliative care](#)

Thymic Cancers

Thymoma/Thymic Carcinoma TNM Staging 8th edition



Disclaimer: If you need this document in accessible format, please contact 1-877-280-8538, TTY 1-800-855-0511, info@ontariohealth.ca and OH-CCO_CIDAPInfo@ontariohealth.ca. Available in English only due to its technical nature and limited target audience. A French version can be made available upon request. For questions, please email info@ontariohealth.ca. Le contenu de ce document est de nature technique et est disponible en anglais seulement en raison de son public cible limité. Ce document a été exempté de la traduction en vertu de la Loi sur les services en français conformément au Règlement de l'Ontario 671/92.